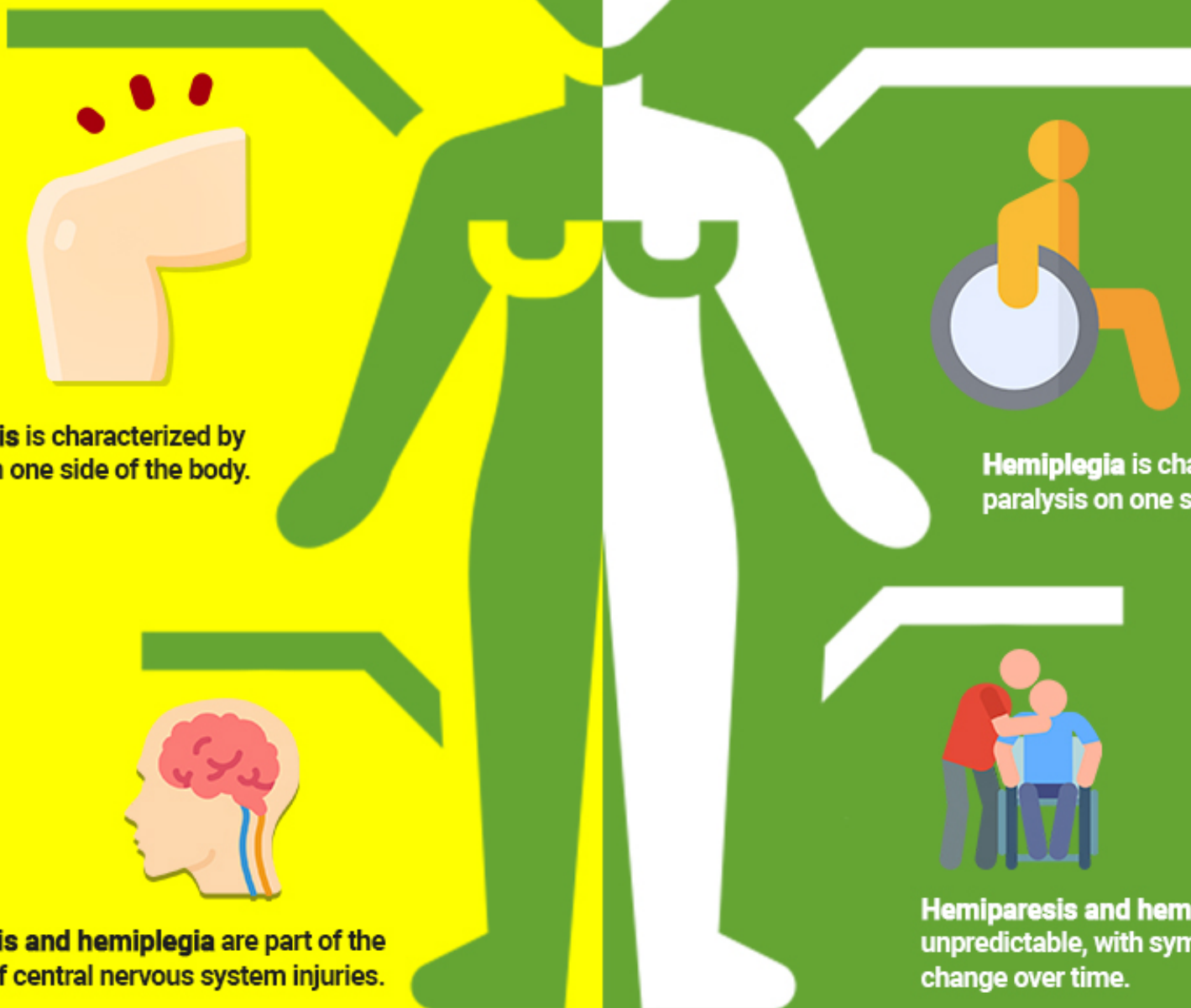


Hemiplegia vs. Hemiparesis

The term “hemi” in both words denote something occurring on one half of the body – the left or the right side.



Hemiparesis is characterized by weakness on one side of the body.

Hemiplegia is characterized by paralysis on one side of the body.

Hemiparesis and hemiplegia are part of the same continuum of central nervous system injuries.

Hemiparesis and hemiplegia are both unpredictable, with symptoms that may change over time.